

Produce custom dashboards at
www.fftaspire.org

LA Example Academy Trust Produced November 2018



Overview

MAT KS4 Attainment 2018 · Actual results

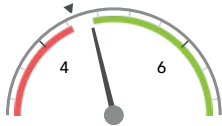
807 pupils

Attainment 8 (Overall)

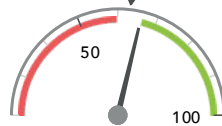
% English & Maths (Grade 4+)

4.7 + ↓

66%



Significantly above the national average (4.5) ◀



In line with the national average (63%) ◀

MAT KS4 Progress 2018 · Value Added

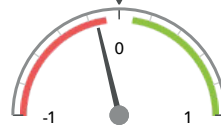
788 matched pupils

Progress 8 (Overall)

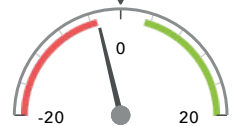
% English & Maths (Grade 4+)

-0.15 - ↓

-3% ↓



Significantly below the national average (0) ◀



In line with the national average (0%) ◀

MAT KS4 higher and lower performing schools 2018

	Higher performing	Lower performing
Overall attainment actual results	Academy Three (257) + ↓ Academy One (106) ↓	Academy Five (85) - ↓ Academy Two (34) Academy Six (125) Academy Four (199)
Overall achievement pupil progress	Academy One (106)	Academy Six (125) - Academy five (85) Academy Four (189) ↓ Academy Three (257) ↓ Academy Two (31)

MAT KS4 higher and lower performing pupil groups 2018

	Higher performing	Lower performing
Overall achievement pupil progress	First language not English (53) + Female (336) ↓ Lower attainers (80) ↓	SEN Support (107) - FSM (59) - FSM (in last 6 years) (139) - ↓ FSM (ever) (179) - ↓ Male (451) - ↓

Example Academy Trust

2018

KS4

VA

Attainment & progress

MAT KS4 Attainment 2018

807 pupils

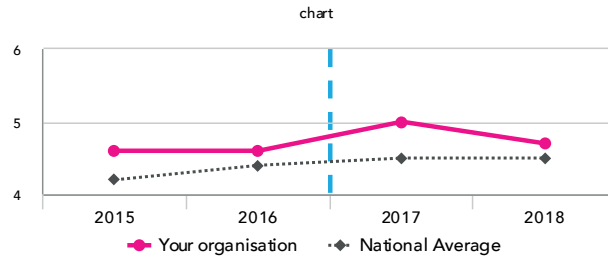
Attainment 8 (Overall)

4.7 + ↓

FFT Rank

100 BETTER ► 1

Significantly above the national average (4.5)



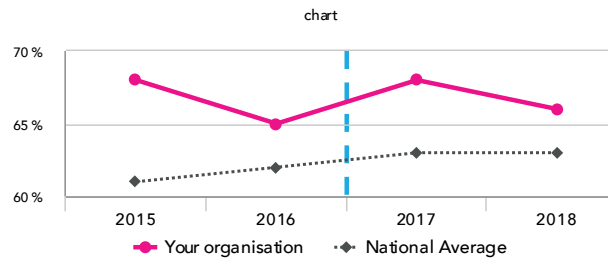
% English & Maths (Grade 4+)

66%

FFT Rank

100 BETTER ► 1

In line with the national average (63%)



MAT KS4 Progress 2018

788 matched pupils

Progress 8 (Overall)

-0.15 - ↓

FFT Rank

100 BETTER ► 1

Significantly below the national average (0)

% English & Maths (Grade 4+)

-3% ↓

FFT Rank

100 BETTER ► 1

In line with the national average (0%)

MAT KS4 performance summary

	Actual results			Pupil progress		
	2016	2017	2018	2016	2017	2018
Number of Pupils / % Matched	872	826	807	96%	96%	98%
Attainment / Progress 8 (Overall)	4.6 +	5.0 + ↑	4.7 + ↓	+0.01	+0.22 + ↑	-0.15 - ↓
Attainment / Progress 8 (English)	4.9 +	5.1 +	4.8 ↓	+0.06 ↑	-0.02	-0.35 - ↓
Attainment / Progress 8 (Maths)	4.5 +	4.7 + ↑	4.6 +	-0.04	+0.04	-0.14 - ↓
Attainment / Progress 8 (Ebacc)	4.1 ↑	4.4 + ↑	4.6 + ↑	-0.10	+0.05 ↑	-0.06
Attainment / Progress 8 (Open)	5.1 +	5.8 + ↑	4.8 + ↓	+0.11 +	+0.65 + ↑	-0.11 - ↓
% English & Maths (Grade 4+)	65%	68% +	66%	-0%	+2%	-3% ↓
% English & Maths (Grade 5+)	-	46% +	42%	-	-0%	-6% - ↓
% Ebacc (Grade 4+)	26%	27% +	31% +	-1%	+0%	+4% +
% Ebacc (Grade 5+)	-	24% +	20% + ↓	-	+0%	+1%
% 5+ GCSEs (Grade 7+)	14%	17%	11% - ↓	-5% -	-2%	-7% - ↓
Average entries per pupil	-	9.9 +	8.0 -	-	+0.4 +	-0.5 - ↓
Average entries per pupil (GCSE only)	-	8.7 +	7.4 -	-	-0.1 -	-0.6 - ↓
% Pupils taking 3 single sciences	-	22% -	20% -	-	-7% -	-11% -

Example Academy Trust

2018

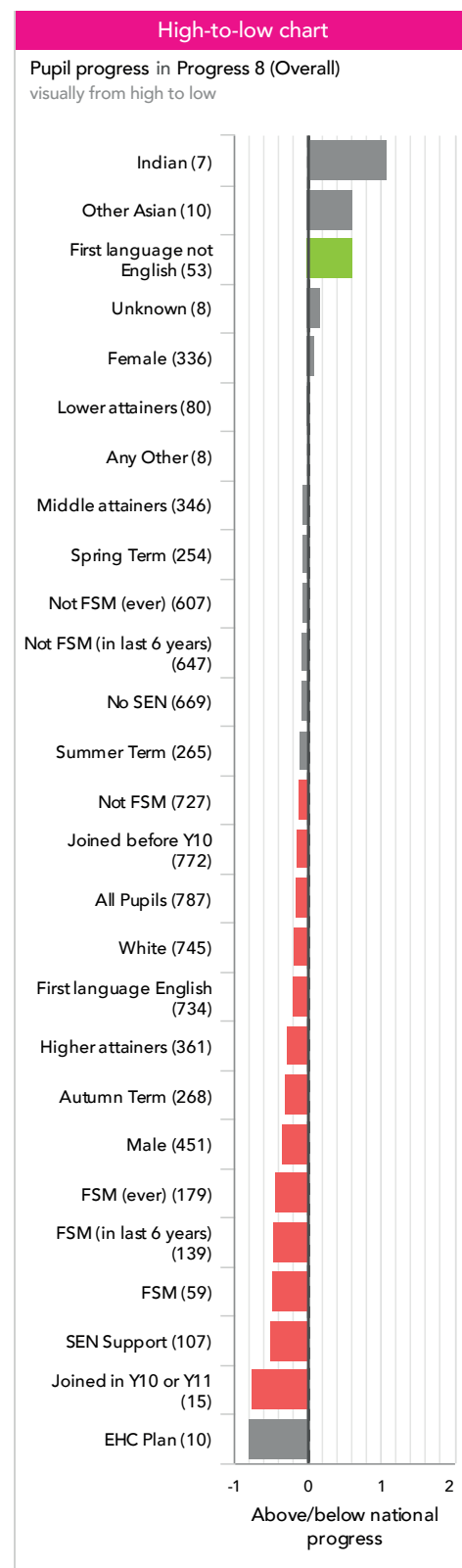
KS4

VA

Pupil groups

MAT KS4 Pupil groups performance 2018

			Actual results		Pupil progress	
	Pupils		Attainment 8 (Overall)	% English & Maths (Grade 4+)	Progress 8 (Overall)	% English & Maths (Grade 4+)
Summary	All Pupils	807	4.7 + ↓	66%	-0.15 + ↓	-3% ↓
Gender	Male	464	4.5 + ↓	63%	-0.33 + ↓	-3%
	Female	343	5.0 ↓	71%	+0.10 ↓	-3%
DFE Prior Attainment	Higher attainers	361	5.8 + ↓	93%	-0.27 + ↓	-1%
	Middle attainers	347	4.1 ↓	51%	-0.05 ↓	-6% + ↓
	Lower attainers	80	2.6 + ↓	13%	+0.03 ↓	-0%
Pupil Premium	FSM (in last 6 years)	141	3.8	42%	-0.46 + ↓	-13% +
	Not FSM (in last 6 years)	665	4.9 ↓	71%	-0.07 ↓	-1%
FSM	FSM	61	3.7	38%	-0.47 +	-15% +
	Not FSM	745	4.8 ↓	69%	-0.12 + ↓	-2%
FSM Ever	FSM (ever)	181	3.9	44%	-0.43 + ↓	-13% +
	Not FSM (ever)	625	5.0 ↓	73%	-0.06 ↓	-0%
Term of Birth	Autumn Term	277	4.7 ↓	61% ↓	-0.29 + ↓	-10% + ↓
	Spring Term	260	4.9 +	71% +	-0.05 ↓	+0%
	Summer Term	270	4.6	67%	-0.09 ↓	+1%
SEN Group	SEN Support	109	3.1	25%	-0.49 +	-13% +
	EHC Plan	10	3.4 +	30%	-0.79 ↓	-19%
	No SEN	687	5.0 ↓	73%	-0.08 ↓	-1%
EAL	First language not English	62	5.4 +	79% +	+0.62 +	+9%
	First language English	745	4.7 ↓	65%	-0.20 + ↓	-4% + ↓
Mobility	Joined in Y10 or Y11	18	4.0 +	56% +	-0.75 +	-14%
	Joined before Y10	788	4.7 ↓	66%	-0.13 + ↓	-3% ↓
Ethnicity	White	762	4.7 + ↓	66%	-0.17 + ↓	-3%
	Black Caribbean	1	2.9	0%	-1.00	-50%
	Black African	4	4.6	50%	-0.49	-19%
	Indian	8	6.9	100%	+1.08	+10%
	Pakistani	2	6.7	100%	+0.84	+6%
	Other Asian	10	5.7	80%	+0.63	+6%
	Chinese	2	7.8	100%	+0.35	+0%
	Any Other	8	5.2	88%	+0.01	+11%
	Unknown	9	3.8	33%	+0.18	-13%
	No Ethnicity Data	1	0.0	0%	-2.57	-6%



Example Academy Trust

2018

KS4

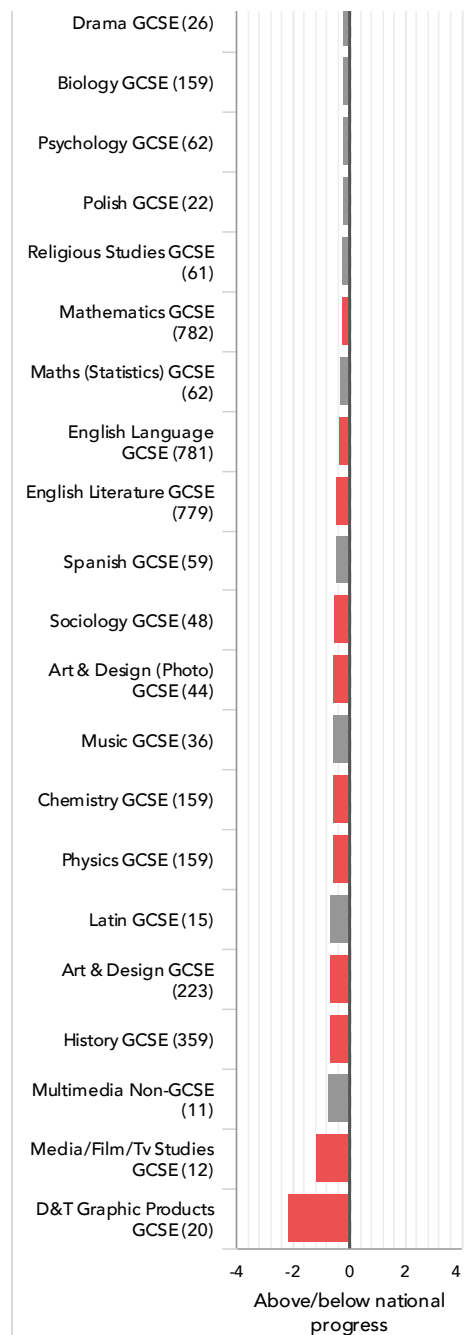
VA

Subjects

MAT KS4 subject performance 2018

			Actual results			Pupil progress			High-to-low chart
Pupils			Avg Point Score	% Grade 4+	% Grade 7+	Avg Point Score	% Grade 4+	% Grade 7+	Pupil progress in Avg Point Score visually from high to low
English and maths	English Language GCSE	799	4.5 ⬇️	69%	11% ⬇️	-0.32 ⬇️	-5% ⬇️	-8% ⬇️	Constr & Built Env Non-GCSE (9)
	English Literature GCSE	797	4.5 ⬇️	70%	13% ⬇️	-0.41 ⬇️	-6% ⬇️	-7% ⬇️	
	Mathematics GCSE	800	4.7 ⬆️	75% ⬆️	16% ⬇️	-0.23 ⬇️	-1% ⬇️	-6% ⬇️	
	Maths (Statistics) GCSE	65	4.7 ⬆️	86% ⬆️	12% ⬇️	-0.25 ⬆️	+2% ⬆️	-10% ⬇️	
Ebacc Subjects	Arabic GCSE	2	8.5	100%	100%	+2.09	+6%	+39%	Physical Education/S...
	Biology GCSE	163	6.3	98% ⬆️	44%	-0.15	+3%	-5%	
	Chemistry GCSE	163	5.9	91%	36%	-0.53 ⬇️	-2%	-14% ⬇️	
	Chinese GCSE	1	8.5	100%	100%	+1.96	+3%	+38%	
	Com.Stds/Comp uting GCSE	30	5.4 ⬆️	83% ⬆️	30%	+0.53	+11%	+7%	
	French GCSE	191	4.9	71% ⬆️	24%	+0.11	+1%	+0%	
	Geography GCSE	431	4.7 ⬆️	66%	25%	-0.08 ⬆️	-2%	+1%	
	German GCSE	166	5.1	88% ⬆️	18%	+0.01 ⬆️	+8% ⬆️	-5%	
	History GCSE	369	4.1 ⬇️	57% ⬇️	15% ⬇️	-0.66 ⬇️	-9% ⬇️	-11% ⬇️	
	Italian GCSE	1	8.5	100%	100%	+1.87	+1%	+39%	
	Latin GCSE	15	6.1	73% ⬇️	53%	-0.64	-18% ⬇️	-9%	
	Physics GCSE	163	5.9	97% ⬆️	36%	-0.53 ⬇️	+3%	-14% ⬇️	
	Polish GCSE	25	6.9	96%	80%	-0.16	-3%	+2%	
	Portuguese GCSE	5	5.7	80%	40%	-1.25	-22%	-28%	
	Russian GCSE	2	7.0	100%	100%	+0.97	+7%	+48%	
	Science Double Awd GCSE	634	4.3 ⬆️	68% ⬆️	14% ⬆️	-0.05	+1%	-0%	
	Spanish GCSE	61	3.8 ⬇️	51% ⬇️	7% ⬇️	-0.44	-6%	-9%	
Other High Value Subjects	Applied Info Tech Non-GCSE	29	5.0 ⬆️	93%	17% ⬆️	-0.05 ⬆️	+5%	-7% ⬆️	Catering Studies Non-GCSE (30)
	Art & Design (Photo) GCSE	45	4.4 ⬆️	67%	11%	-0.51 ⬇️	-10%	-8% ⬆️	
	Art & Design GCSE	230	4.3 ⬇️	65% ⬇️	9% ⬇️	-0.65 ⬇️	-10% ⬇️	-13% ⬇️	
	Building Non-GCSE	1	4.0	100%	0%	-0.26	+15%	-10%	
	Business Studies:Single GCSE	62	5.1 ⬆️	82% ⬆️	29% ⬆️	+0.28	+2%	+5%	
	Business Studies:Single Non-GCSE	57	5.8 ⬆️	91% ⬆️	46% ⬆️	+1.01 ⬆️	+5%	+22% ⬆️	
	Catering Studies Non-GCSE	30	6.0 ⬆️	93% ⬆️	40% ⬆️	+1.07 ⬆️	+5%	+15%	
	Computer Systems Non-GCSE	29	5.3	97%	21%	+0.34	+6%	-4%	
	Constr & Built Env Non-GCSE	9	5.5	78%	56% ⬆️	+2.07 ⬆️	+22%	+44% ⬆️	
	D&T Electronic Products GCSE	37	5.3	84% ⬆️	38%	-0.01	-4%	+2%	

			Actual results			Pupil progress		
Pupils			Avg Point Score	% Grade 4+	% Grade 7+	Avg Point Score	% Grade 4+	% Grade 7+
D&T Food Technology GCSE	55		4.2 ↓	58%	13%	-0.00	+1%	-1%
D&T Graphic Products GCSE	20		2.6 ⬇️	15% ⬇️	0%	-2.13 ⬇️	-37% ⬇️	-24% ⬇️
D&T Product Design GCSE	100		4.5 ⬆️	63%	19%	+0.72 ⬆️	+11% ⬆️	+10% ⬆️
D&T Resistant Materials GCSE	55		4.3	65%	18%	-0.01	+1%	+1%
D&T Textiles Technology GCSE	16		6.3 ⬆️	88%	63% ⬆️	+0.37	-6%	+13%
Dance GCSE	24		5.2	75%	33%	+0.00	-1%	+7%
Dance Non-GCSE	13		5.9	92%	38%	+0.13	-4%	+1%
Drama GCSE	27		4.9	74%	26%	-0.14	+3%	+1%
Drama Non-GCSE	65		5.1	92%	14% ⬇️	-0.11 ↓	+4%	-15% ⬇️
Engineering Studies Non-GCSE	55		5.4 ↑	98% ⬆️↑	22%	+0.38 ↑	+10% ⬆️↑	-4%
General Studies GCSE	4		1.6	0%	0%	-1.20	-24%	-6%
Health & Social Care Non-GCSE	48		7.1 ⬆️↑	100% ⬆️	75% ⬆️	+1.73 ⬆️	+10% ⬆️	+42% ⬆️
Information Technology GCSE	31		4.6	71%	19%	+0.85 ⬆️↑	+25% ⬆️	+8%
Media/Film/Tv Studies GCSE	12		3.4	42%	8%	-1.12 ⬇️	-12%	-9%
Multimedia Non-GCSE	11		3.2	55%	0%	-0.67	+5%	-16%
Music GCSE	37		4.8	70%	16%	-0.51	-6%	-13%
Music Non-GCSE	2		7.0	100%	50%	+1.06	+6%	+10%
Physical Education/Sport Studies GCSE	157		5.3 ⬆️↑	82% ⬆️↑	22%	+0.41 ⬆️	+11% ⬆️↑	+3%
Physical Education/Sport Studies Non-GCSE	53		5.9 ⬆️	91%	53% ⬆️	+1.09 ⬆️	+4%	+28% ⬆️
Psychology GCSE	66		4.6	68%	23%	-0.16	-3%	-4%
Religious Studies GCSE	63		4.9	67%	30%	-0.20	-6%	+3% ↑
Sociology GCSE	49		3.7 ⬇️	55%	2% ⬇️	-0.50 ⬇️	+5%	-11% ⬇️
Sports Science Non-GCSE	21		6.0 ⬆️	90% ⬆️	57% ⬆️	+1.43 ⬆️	+3%	+32% ⬆️



Example Academy Trust

2018

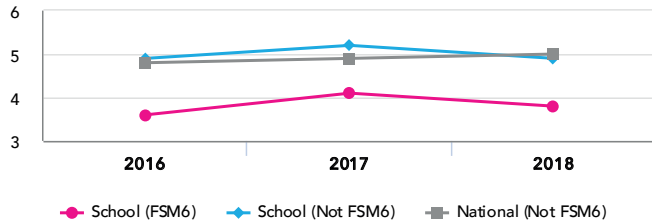
KS4

VA

Disadvantaged pupils

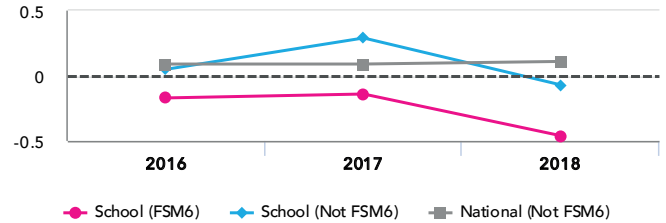
MAT KS4 attainment for disadvantaged pupils 2018

Attainment 8 (Overall)



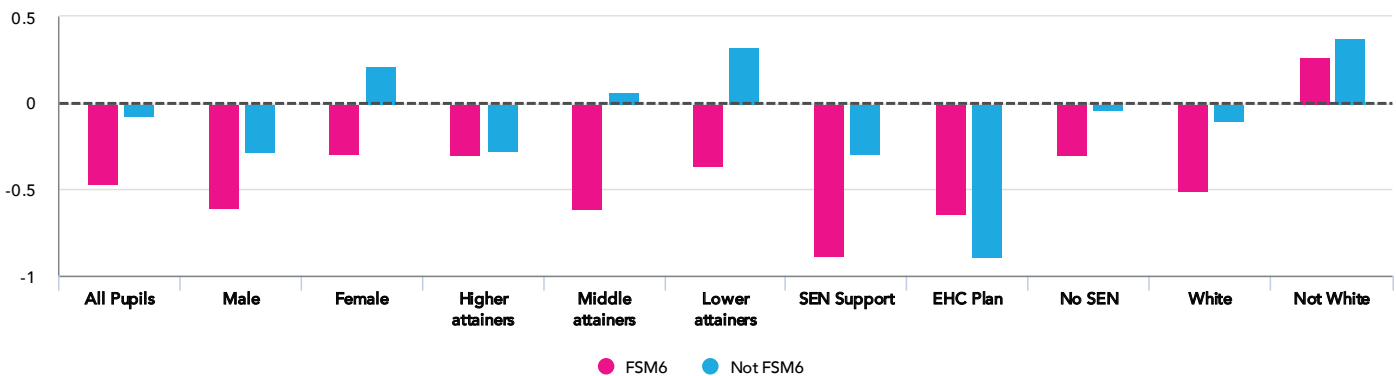
MAT KS4 progress for disadvantaged pupils 2018

Progress 8 (Overall)



MAT Progress gap

Progress 8 (Overall)



Attainment & progress

Pupils				Attainment			Progress		
				Attainment 8 (Overall)			Progress 8 (Overall)		
				FSM6	Not FSM6	Gap	FSM6	Not FSM6	Gap
Summary	All Pupils	141	665	3.8	4.9	↓ -1.1	-0.46	-0.07	↓ -0.39
Gender	Male	74	391	3.5	4.7	-1.2	-0.6	-0.28	-0.32
	Female	67	274	4.1	5.3	-1.2	-0.29	0.21	-0.5
DFE Prior Attainment	Higher attainers	43	318	5.6	5.9	-0.3	-0.3	-0.27	-0.03
	Middle attainers	65	282	3.3	4.2	-0.9	-0.61	0.07	-0.68
	Lower attainers	31	48	2.2	2.9	-0.7	-0.36	0.33	-0.69
SEN Group	SEN Support	37	72	2.6	3.4	-0.8	-0.88	-0.29	-0.59
	EHC Plan	4	6	2.9	3.8	-0.9	-0.64	-0.89	0.25
	No SEN	100	587	4.3	5.1	-0.8	-0.3	-0.04	-0.26
Ethnic Group	White	132	630	3.8	4.9	-1.1	-0.51	-0.1	-0.41
	Not White	9	35	4.3	5.6	-1.3	0.27	0.38	-0.11

Example Academy Trust

2018

KS4

VA

Schools

KS4 school performance summary 2018

Pupils	Actual results		Pupil progress	
	Attainment 8 (Overall)	% English & Maths (Grade 4+)	Progress 8 (Overall)	% English & Maths (Grade 4+)
MAT Example Academy Trust 805	4.7 + ↓	66%	-0.15 - ↓	-3% - ↓
Academy Three 255	5.7 + ↓	86% +	-0.09 - ↓	-1%
Academy One 106	4.7 - ↓	69%	+0.14	+7%
Academy Six 125	4.2	44% -	-0.47 -	-23% -
Academy Two 34	4.1	58%	-0.06	-2%
Academy Four 199	4.4	68% ↑	-0.16 - ↓	+6%
Academy Five 83	3.6 - ↓	33% - ↓	-0.19	-12% -

